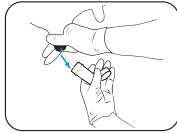


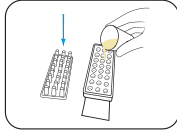
## Fill a Mastatest® cartridge



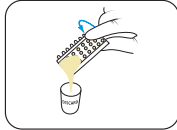
Take a clean milk sample  
(see user videos)



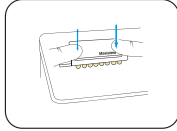
Put on clean gloves, and remove  
cartridge from pack



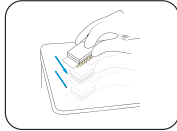
Remove cartridge lid and  
half-fill cartridge with milk



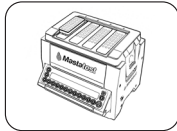
Pour off surplus milk and discard



Replace lid, pushing down firmly,  
and label lid with cow details



Tap firmly 2-3 times, repeating if  
air-bubbles are visible in wells



Insert cartridge into Lapbox™  
with arrows facing to the back  
and replace lid



[vetoquinol-mastatest.com/how-to-use](http://vetoquinol-mastatest.com/how-to-use)

Deutsch, Français, English, Español, Italiano,  
Portuguese, Polski, Nederlands

## Start a Mastatest®

### To Begin:

- From the Lapbox main menu, select *Start Mastatest* **ENTER**
- Select Lapbox position used: If first free position used **ENTER**,  
or scroll **▶** to select and **ENTER**

### Option 1: BoxStart

- Select test type:
  - For Clinical **ENTER**
  - For HiSCC **▼** **ENTER**
- Select *BoxStart* **ENTER**
- Input cow number (e.g. 00123) and scroll **▼** to select quarter **ENTER**
- Confirm start **ENTER**

### Option 2: QuickStart

- Scroll down to select test type:
  - For Clinical **▼** **▼** *QuickCM* **ENTER**
  - For HiSCC **▼** **▼** **▼** *QuickSCC* **ENTER**
- Input test details to [vetoquinol.mastatestsystem.com](http://vetoquinol.mastatestsystem.com) within 21 hrs

### Next steps:

- Countdown timer shows remaining time.
- Results emailed within 24 hrs
- Further tests can be started independently

vetoquinol

Mastatest